



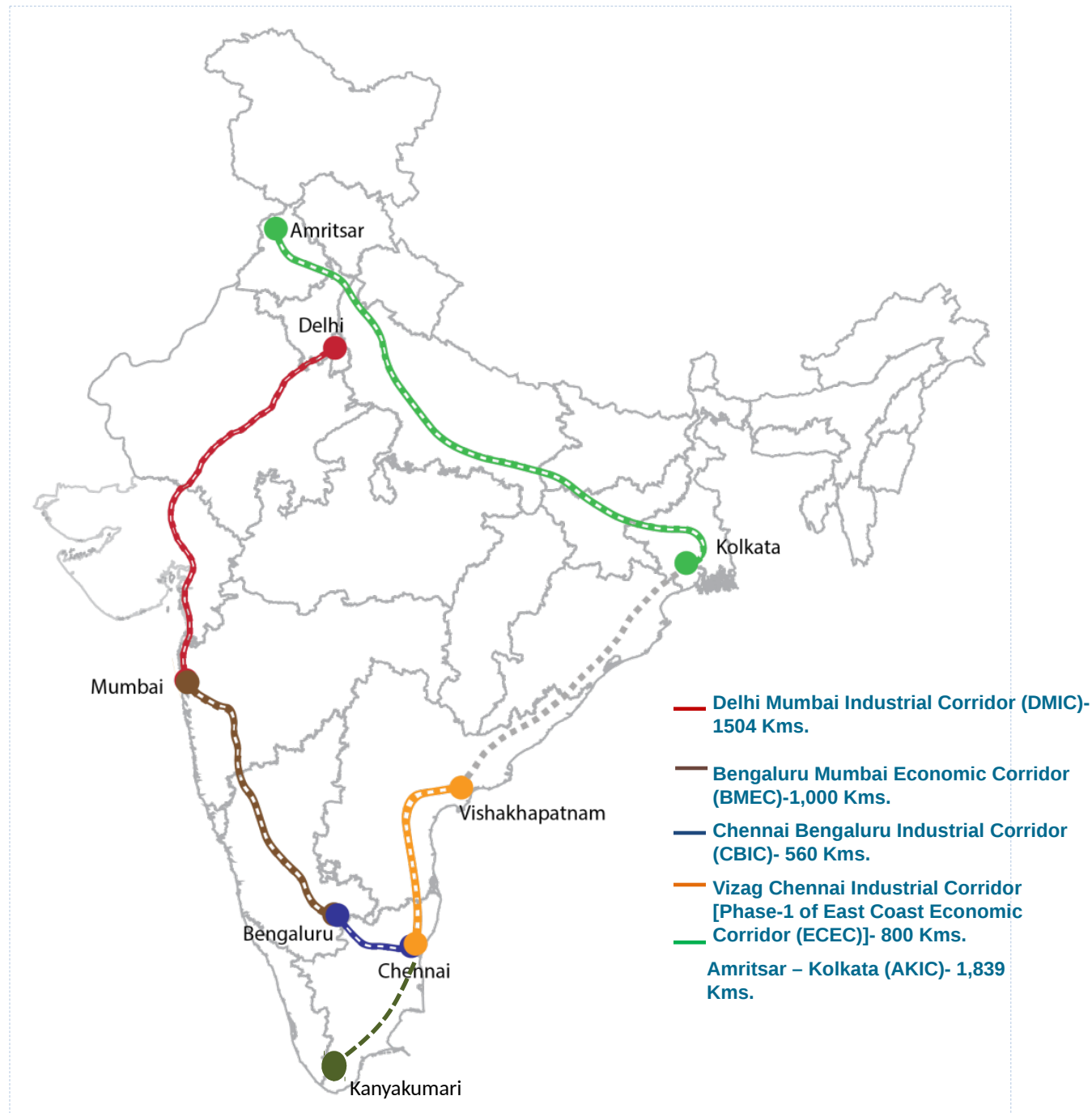
INDUSTRIAL CORRIDORS IN INDIA

***“Smart Investment Destinations –
Opportunities for the World ”***

Industrial Corridor Programme

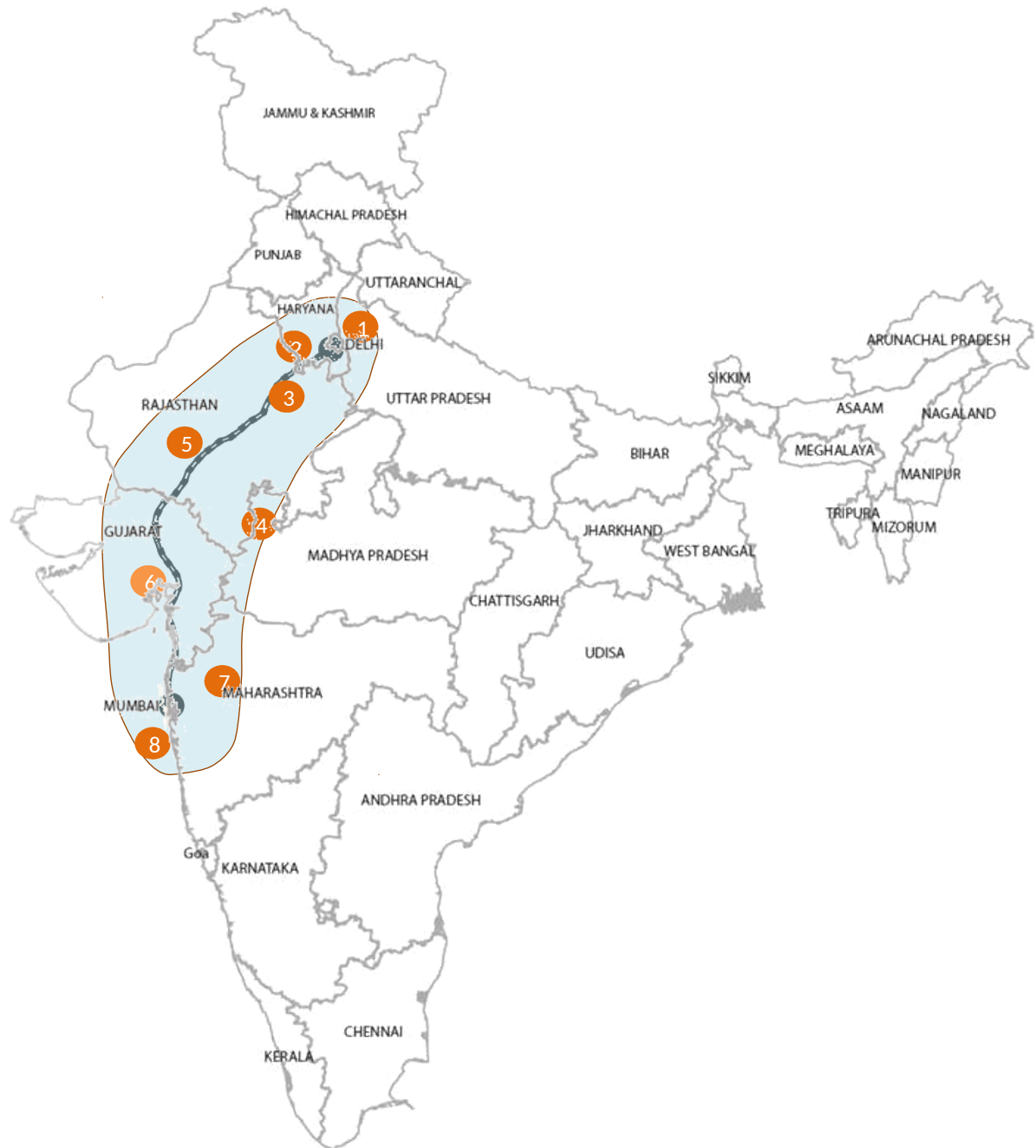


Government of India
has taken up
development of five
industrial corridors.



Delhi Mumbai Industrial Corridor

- 1 Dadri Noida Ghaziabad, UP
- 2 Manesar Bawal, Haryana
- 3 Khushkhera Bhiwadi Neemrana, Rajasthan
- 4 Pitampura Dhar Mhow, MP
- 5 Jodhpur Pali Marwar, Rajasthan
- 6 Ahmedabad Dholera, Gujarat
- 7 Shendra Bidkin, Maharashtra
- 8 Dighi Port, Maharashtra



Large Land Parcels



Planned Communities



Ease of doing business



Live-work-play



Supportive policies



ICT Enabled Infrastructure



Plug & Play services



Single Window



SPV

Approvals Obtained



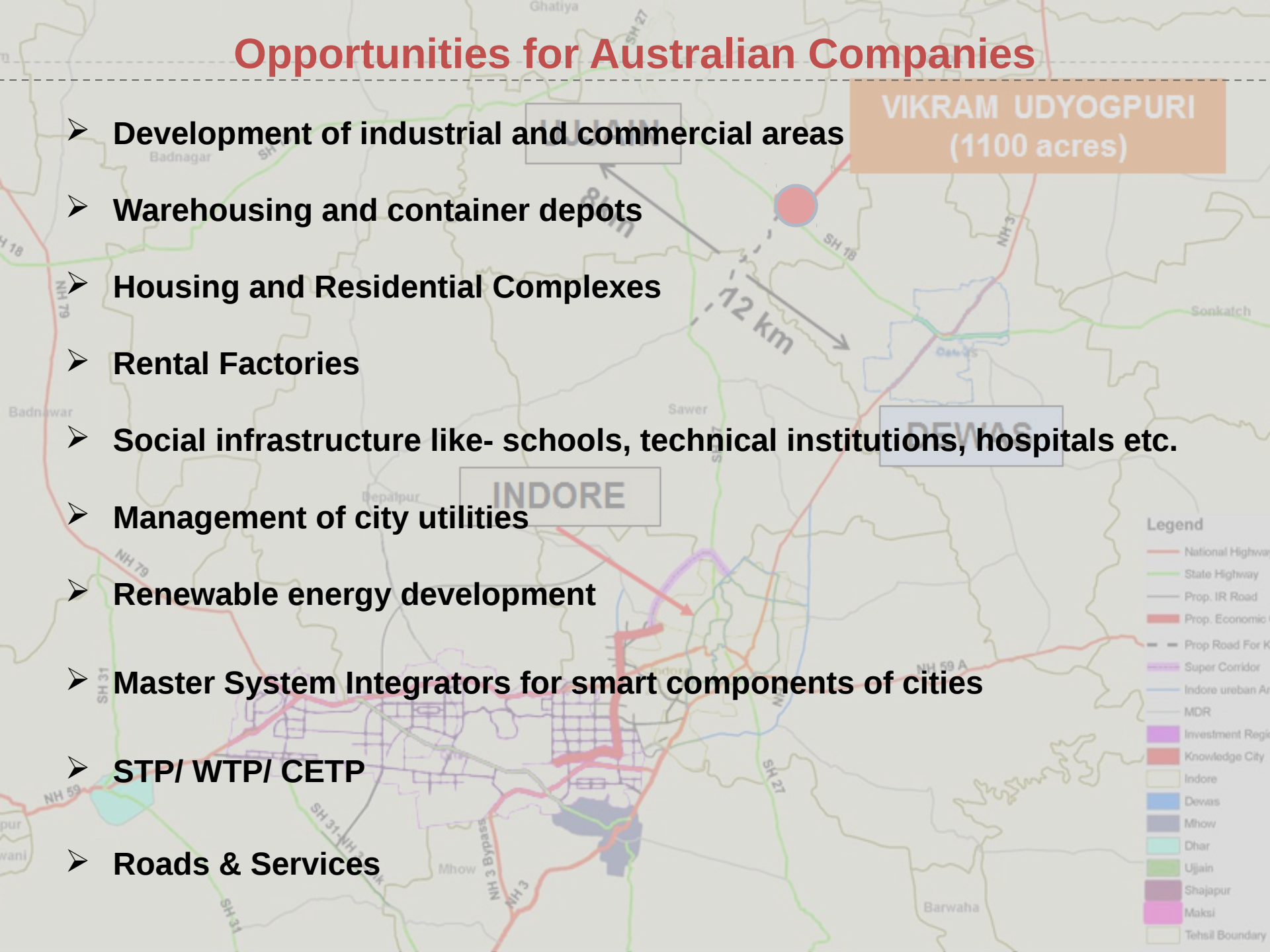
Sustainable living



**Advantage
Industrial Cities**

Opportunities for Australian Companies

-
- INDORE**
- DEWAS**
- 12 km**
- Legend**
- NH 79
 - SH 31
 - SH 31-NH 79
 - SH 27
 - NH 59 A
 - 3 Bypass
 - Mihow
 - SH 18
 - SH 15
 - SH 16
 - SH 17
 - SH 18
 - SH 19
 - SH 20
 - SH 21
 - SH 22
 - SH 23
 - SH 24
 - SH 25
 - SH 26
 - SH 27
 - SH 28
 - SH 29
 - SH 30
 - SH 31
 - SH 32
 - SH 33
 - SH 34
 - SH 35
 - SH 36
 - SH 37
 - SH 38
 - SH 39
 - SH 40
 - SH 41
 - SH 42
 - SH 43
 - SH 44
 - SH 45
 - SH 46
 - SH 47
 - SH 48
 - SH 49
 - SH 50
 - SH 51
 - SH 52
 - SH 53
 - SH 54
 - SH 55
 - SH 56
 - SH 57
 - SH 58
 - SH 59
 - SH 60
 - SH 61
 - SH 62
 - SH 63
 - SH 64
 - SH 65
 - SH 66
 - SH 67
 - SH 68
 - SH 69
 - SH 70
 - SH 71
 - SH 72
 - SH 73
 - SH 74
 - SH 75
 - SH 76
 - SH 77
 - SH 78
 - SH 79
 - SH 80
 - SH 81
 - SH 82
 - SH 83
 - SH 84
 - SH 85
 - SH 86
 - SH 87
 - SH 88
 - SH 89
 - SH 90
 - SH 91
 - SH 92
 - SH 93
 - SH 94
 - SH 95
 - SH 96
 - SH 97
 - SH 98
 - SH 99
 - SH 100



Freight Villages Under DMIC

Freight Village at Dadri, Uttar Pradesh

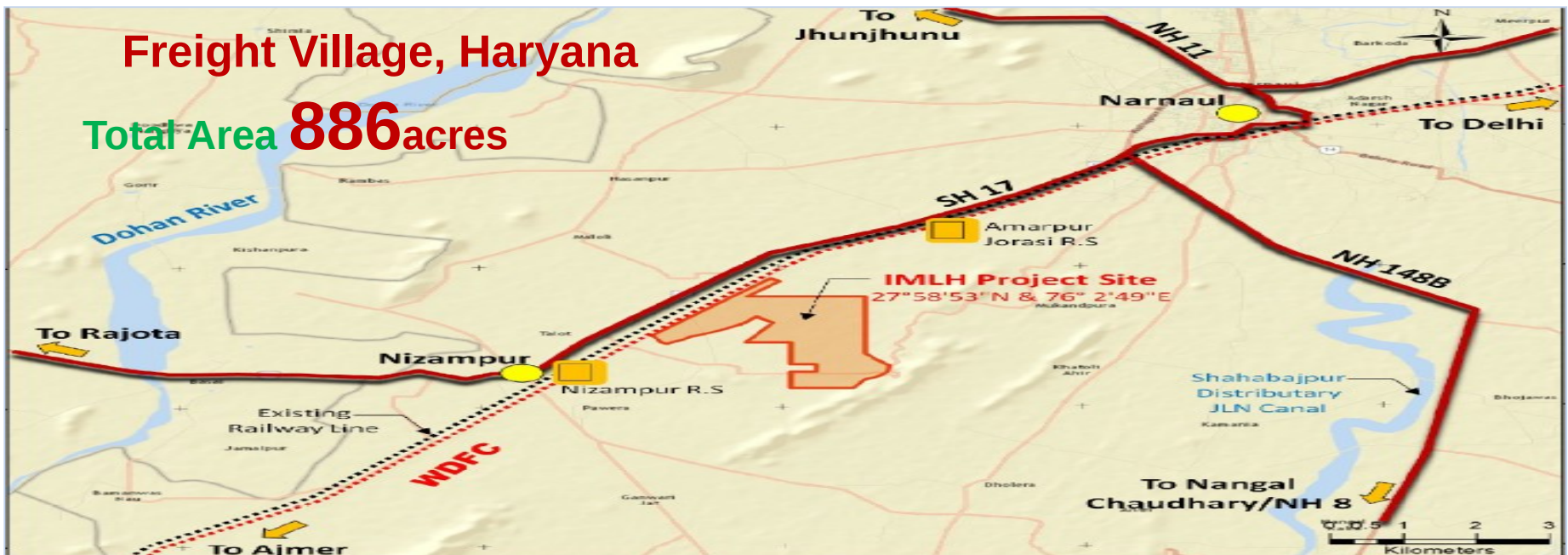
Total Area

1200acres

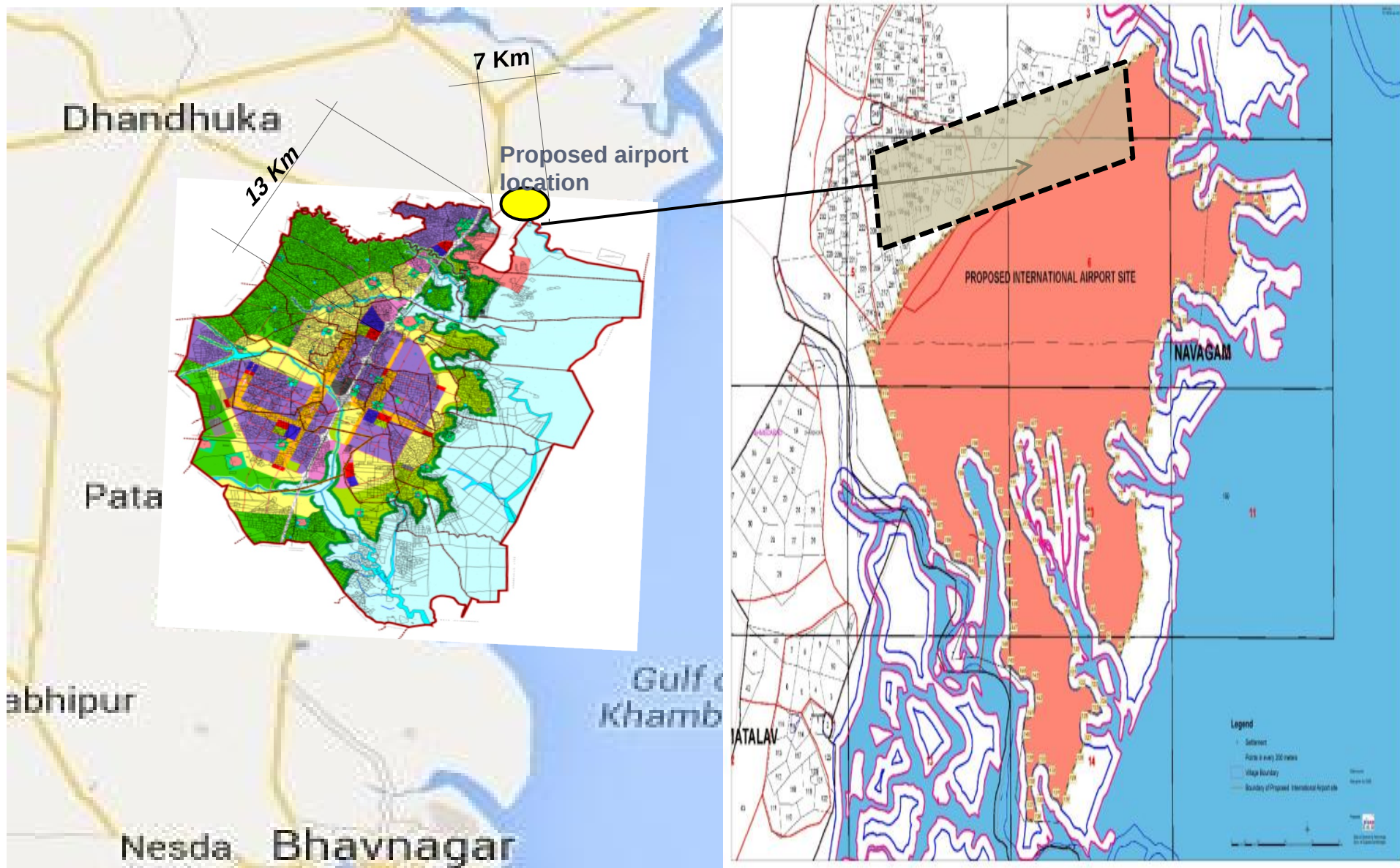


Freight Village, Haryana

Total Area **886**acres



Greenfield International Airport Project at Dholera, Gujarat



Thank You



www.dmicdc.com